



CUSTOMER DRIVING TEST INSTRUCTIONS

Appointment Date and Time

Appointment Location

Confirmation Number

The following instructions are designed to help prepare you for your driving test.

- Arrive 15 minutes prior to your scheduled appointment. If you need to take the General Knowledge test also, arrive 1 hour and 15 minutes earlier than your scheduled road test appointment.
- During the driving test, the examiner will give you directions as to where to go and what to do next. Do not hesitate to ask your examiner to clarify requests.
- Remain calm and obey all speed limits and traffic laws. There are no tricks on the test.
- Please discuss the need for an interpreter prior to starting the test.
- You will be required to provide a vehicle in safe operating condition to perform the test. The vehicle must be clean and free of debris; a vehicle inspection will be performed prior to testing. The vehicle must have a valid registration and proof of insurance.
- During the test you will be required to perform basic operating maneuvers.
- After the test is completed, the examiner will review your test results with you. If you disqualify you will be asked to study or practice and return to test on another day.
- Initial driving test is \$6.25; each subsequent test is \$26.25*

**Note: If you have lost your learner's permit or need an address or name change, there will be an additional \$25.00 fee.*

I understand that if the Lee County Tax Collector Road Test Examiner feels it is dangerous to allow me to continue operating the motor vehicle during this test, I give the examiner permission to drive this vehicle back to the Tax Collector's office.

Signature: _____

Date: _____

Vehicle Pre-Check

In accordance with S. 316, Florida Statutes, the vehicle must pass the safety inspection. Every customer is required to provide a safe vehicle, in good working order, for their driving test. Examiners reserve the right not to administer a driving test if the vehicle is unsanitary or the condition of the vehicle places an examiner in danger (i.e. side windows broken/not operable).

Interior – The interior of the vehicle must be clean and free of debris.

Horn – Must be audible under normal conditions at a minimum of 200'. Operating device must be located to allow for easy control by the driver.

Rearview Mirror – Must be located to reflect to the driver a view of the highway for a distance of at least 200' to the rear.

Direction Signals - Will be checked from the front and rear of the vehicle.

Steering Wheel – No more than three inches of play.

Footbrake – Will be checked by sitting in the vehicle and pressing hard on the brake pedal. The brake pedal should feel solid and must not come within two inches of the floor unless the vehicle is equipped with power brakes.

Tires – No tires that are bald, excessively worn or cord showing.

Brake Lights (stop light) – Two are required on all vehicles manufactured on or after 01-01-72 – prior to that date, one is sufficient.

Tail Light – Two are required on all vehicles manufactured on or after 01-01-72 – prior to that date, one is sufficient.

Headlights – Required when visibility has been reduced to 1,000' or less.

Windshield Wiper – Required on the driver's side when raining.

Muffler/Exhaust System – Must be firmly attached to the vehicle and in good working order.

Glass (visibility) – Driver must have a clear view to the front, sides, and rear (by mirror). Windows cannot be replaced by cardboard or other solid material or have stickers, posters, signs or broken or cracked glass that obstructs the driver's vision.

Reflectors/Flags/Flares/Fuses – When required by law.

Emergency Brake – Operating device must be located to allow for control by each driver.

Maximum Bumper Height Requirements:

Net Weight	Front	Rear
Automobiles for private use:		
Net weight of less than 2,500 pounds	22"	22"
Net weight of 2,500 pounds or more but less than 3,500 pounds	24"	26"
Net weight of 3,500 pounds or more	27"	29"
Trucks:		
Net weight of less than 2,000 pounds	24"	26"
Net weight of 2,000 or more but not more than 3,000 pounds	27"	29"
Net weight of 3,000 pounds, but not more than 5,000 pounds	28"	30"

TÈS KONDWI – ENFÒMASYON POU KLIYAN.

Fòm sa la pou li ka prepare ou sou tès kondwi-a. silvouplè li fòm sa e mande kesyon sou nenpòt bagay ke ou pa fin konprann avan ke ou kòmanse tès la.

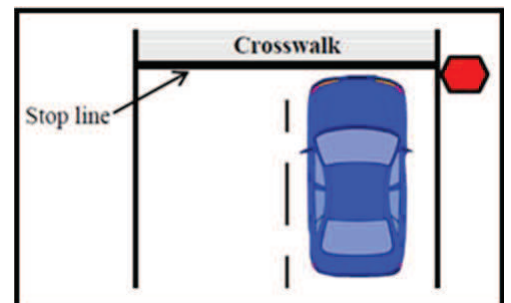
Li rekòmande ke chak kliyan dwe genyen yon machin ki nan bon kondisyon pou li kapab fè tès kondwi-a. Egzaminatè/Ajan lisans tax kolektè ap bral enspekte machin nan avan li kòmanse tès la. Machin nan dwe:

1. Gen yon plak valab
2. Gen yon rejistrasyon valab pou machin-nan
3. Gen pwèv asirans pou pwoteksyon pou pwòp kò moun nan ak domaj pwopriyete .
4. Pase enspeksyon sekirite machin- nan
5. Gen senti sekirite chèz yo ki fonksyone byen (eksepte: machin key o fèt avan lane 1968 e camyon ki fèt avan 1972).

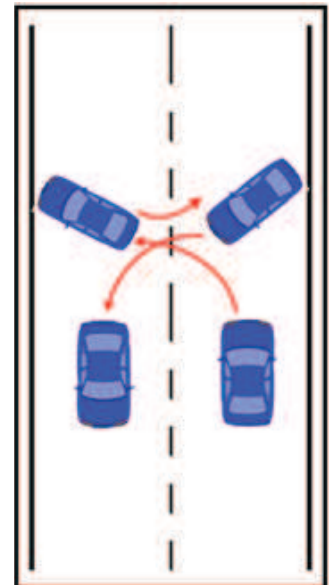
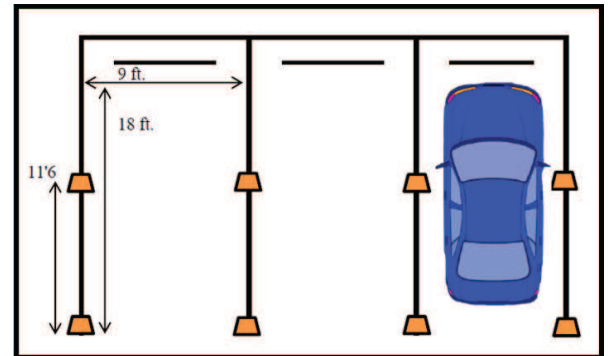
Pandan tès kondwi-a, egzaminatè ap bral ba-ou direksyon sou kote ou brale epi sa pou fè aprè. Pa gen trik nan tès kondwi-a epi li pap bral mande-ou anyen ki illegal. Mete atansyon –ou sou enstriksyon yo epi obeyi ak limit vitès e lwa sikilasyon-yo pandan tout tan tès la. Rete kalm pandan tout tan-an epi fè manèv yo nan pi bon moyen posib ke ou kapab.

Ou dwe prepare-ou pou pèfòme manèv say o nan tès kondwi-a:

- Apwoche yon twotwa - mete ou sou bon liy nan epi gade nan chak direksyon. Chanje andrenaj la tou Dousman epi kòrèkteman. (si machin-nan genyen transmisyon ala men)
- Fè bak – Fè bak ak yon distans de 50 pye sou yon vitès tou Dousman. Pa itilize retwovizè. Gade nan vit deyè-a pito.
- Swiv ak pwekosyon nan yon distans – Pa kondwi twò kole deyè lòt machin yo. Itilize règleman kat dezyèm-nan.
- Obzève metòd sa ki gen dwa – Kite pyeton-yo travèse , met-ou soukote epi kanpe pou machin ijans yo epi pa antre nan entèseksyon kote wap rankontre ak lòt machin.
- Obeyi pano Stop – Bay sinyal ki apwopriye lè wap vire, apwoche nan liy ki apwopriye, kanpe nèt avav ou rive sou yon pyeton ki sou yon twotwa oubyen sou yon liy . epi rete kanpe jiskaske ou kabap avanse ak pwekosyon san ou pap annafè avèk trafik oubyen pyeton. Mete nan tèt ou ke prèske tout entèseksyon genyen dwa legal sou twotwa-yo; ak mak ou san mak. Yon twotwa ki san mak gen yon pati sou wout la nan yon entèseksyon ki bral konekte nan lòt bò wout la.
- Obeyi sinyal sikilasyon – Antre nan liy apwopriye-a epi apwoche limyè-a ak yon vitès ki kapab ede-ou kanpe si limyè-a ta vin chanje. Lè oud we kanpe, kanpe avan pyeton yo sou twotwa-a avèk liy kanpe-a. Lè limyè-a vini vèt, pa kouri ale pandan ke sikilasyon-an pa fin klènan kafou-a. Bay sinyal ki kòrèk pou lè ou kanpe oubyen pou lè wap vire. Gade pou siy “ Pa vire” epi “sans inik”.



- Travèse – Toujou gade devan-ou avèk dèyè pou ka assure ou ka travèse avèk pwekosyon. Travèse sou bò goch ou, sèlman si machin ki devanw' la gen pou li al vire sou bò goch oubyen liyn pou vire agoch nan lari-a genyen plis ke yon liyn nan chak direksyon oubyen nan chak bò wout la. Pa pase sou bò kote wout la.
- Andrenaj (Klòtch) – Chanje andrenaj (klòtch) tout dousman e kòrèkteman (si machin ou-an fèt ak andrenaj “klòtch”).
- Pake tou dwat – Pake machin nan andedan espas pakin nan tou dwat. Lè ou byen pake , machin nan dwe rete nan mitan espas la san gen yon ti pati deyò liyn nan. Mannèv sa bay egzaminatè-a opòtinite pou li obzève si ou kapab:
 - a) Gen kontwòl machin la nan yon espas ki fèm
 - b) Jije distans
 - c) Pran kontwòl machin-nan pandan ke wap pake nan yon espas pakin tou dwat.
- Kanpr/kòmanse sou mònn. – Si genyen yon mònn nan tès kondwi-a, mannèv sa se menmjan lè ou ap pake tou dwat nan yon espas pakin oubyen lè machin nan sou bò wout- la pou li al vire lè li bral fè mannèv demitou-a. Yo bral baw' enstriksyon pou montre oubyen pou di egzaminatè-a kisa oud we fè si ou ap kite machin nan pake sou yon tèt mònn oswa anba yon mònn ki genyen yon koub oubyen san koub.
- Kanpe sèk - Kondwi jiska 20 milyaj pa lè epi fè li vit. Kanpe ak pwekosyon pandan ke egzaminatè-a baw enstriksyon-an.
- Sinyal ak Vire – antre nan liyn apwopriye-a epi mete sinyal-ou pou pi piti 100 pye. Ou kapab itilize sinyal avèk men-ou oubyen sinyal mekanik. Ralanti avan ou rive sou twotwa-a epi vire sou liyn apwopriye-a.
- Rete sou liyn apwopriye – Kondwi sou liyn dwat la egsepte sou wout sans inik. Pa chanje liyn jiskaske ou kapab fè li ak pwekosyon.
- Vire an twa pwen – Vire machin ou-an nan yon espas ki preske a 30 ou 40 mètr .
- Itilize pozisyon ki apwopriye – Kenben tou de men-ou sou volan-an epi pa mete koud bwa-ou sou fenèt la.



Egzaminatè-a ap bral esplike ou tout erè ou te kapab fè yo aprè tès la fini nèt. Si ou pa pase tès kondwi-a, yo bral mande ou pou al etidye anko oubyen al fè Pratik ankò epi wa retounen yon lòt jou pou yon lòt tès.

Si ou pase tès la, egzaminatè-a ap bral kolekte lajan epi ap ba-ou lisans-ou. Si ou remèt pèmi kondwi –a epi ou pa fè pyès chanjman, yo pap chaje-ou lajan pou ranplase lisans clas E; Ankosekan, gen yon \$6.25 pou tax kolektè kid we bay si ou jwen lisans ou-a nan tax kolektè ofis la.